

## FREQUENTLY ASKED QUESTIONS

### HOW TO PAY THE TRAINING FEE?

Payment can be done upon registration or online deposit via SEAFDEC/AQD's nominated bank in Iloilo City, Philippines. Credit card payments are not accepted.

### WHAT ARE INCLUDED IN THE TRAINING FEE?

The training fee is inclusive of the registration fee, training kit & materials, transportation, and field trips. Airfare, food, accommodation, and other related expenses are NOT included.

### WHAT ARE THE TRAVEL ARRANGEMENTS?

You may email us the flight details/itinerary for airport transfer schedule. You will be picked up from Iloilo International Airport by SEAFDEC staff or a designated SEAFDEC driver. Airport send-off services will also be provided.

### WHAT ARE THE PASSPORT/VISA REQUIREMENT?

You must secure a valid passport good for the duration of the course and if required, a 47 (A)2 or 9(A) travel visa for entry to the Philippines if the stay exceeds 30 days. Participants are responsible for visa and related fees.

### DO YOU ISSUE CERTIFICATE OF APPEARANCE?

A Certificate of Training will be awarded after the course. A separate Certificate of Appearance or Participation can also be availed upon request.

**ATTEND OUR HANDS-ON TRAINING!**  
**INQUIRE NOW!**

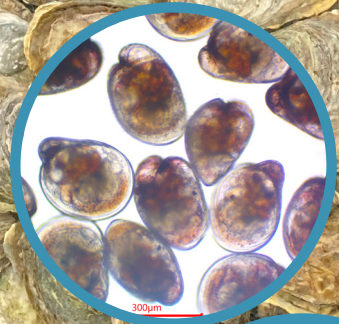
To apply, kindly contact:

Southeast Asian Fisheries Development Center  
AQUACULTURE DEPARTMENT  
Training and Information Division  
(63-33) 330 7030 | [training@seafdec.org.ph](mailto:training@seafdec.org.ph)  
[www.seafdec.org.ph/training](http://www.seafdec.org.ph/training)



SOUTHEAST ASIAN FISHERIES DEVELOPMENT CENTER  
AQUACULTURE DEPARTMENT

## Training Course on Oyster Hatchery Operations (Cultchless/Single-Spat Method)



The 9-day training course consists of



Lectures



Hands-on  
practical sessions



Group  
Discussions



Field Trips

- ✓ Oyster Biology
- ✓ Seed Production
- ✓ Larval Rearing and Nursery
- ✓ Broodstock Management
- ✓ Natural Food Culture
- ✓ Economic Feasibility



# ABOUT THE TRAINING

## Why join the oyster hatchery operations training course right now?

- Oysters are a high-demand seafood worldwide.
- They can be induced to spawn year-round in captivity, ensuring continuous seed supply.
- Grow-out culture is low-cost and eco-friendly, relying on natural plankton.
- SEAFDEC/AQD offers proven and innovative hatchery-to-grow-out techniques.

## What can be learned from the course?

Participants will gain technical knowledge and hands-on skills in broodstock management, seed production, larval rearing, nursery, and grow-out culture of oysters.

### Specific objectives for participants

- Understand oyster biology and life cycle.
- Apply proper broodstock selection, management, and induced spawning techniques.
- Learn methods for larval rearing, natural food culture, and feeding.
- Acquire skills in nursery and grow-out culture systems.
- Gain knowledge on site selection, maintenance, and biosecurity.
- Explore good aquaculture practices for sustainable oyster farming.

## What to expect in the training period?

### ACCOMMODATION

The accommodation cost is not included in the training fee but lodging at the apartment facilities in SEAFDEC/AQD's Tigbauan Main Station is recommended. The air-conditioned apartment units have two single beds each and are equipped with a private bathroom. Wi-Fi and self-service laundry machines are also available. For more information and arrangements, contact the Housing Management Office at [hbpmu@seafdec.org.ph](mailto:hbpmu@seafdec.org.ph) and Training Section at [training@seafdec.org.ph](mailto:training@seafdec.org.ph).

### FOOD

A cafeteria run by a private concessionaire is available within the Tigbauan Main Station. Local diners, grilles and restaurants are available in the towns of Tigbauan (3 km east of the station) and Guimbal (5 km west of the station). Trainees with food restrictions or want arranged meals may make prior arrangements with the cafeteria manager.

### TRANSPORTATION

Airport pick-up and send-off services will be provided to participants. Transportation for travel outside of the training schedule shall be on the account of the participants. Public transportation is accessible within the area in going to nearby towns or to Iloilo City (25 km away).

### WEEKENDS

Some activities may be done during the weekends (hatchery activities) but when the work is done, participants are free to go to attend to their personal needs. Tours and field trips may also be scheduled during weekends.

### INTERNET

The apartment building is reasonably covered with Wi-Fi internet connection. There are also hot spots within the complex where participants can access the internet.

### SECURITY

Security staff are on duty 24 hours a day throughout the complex.

