



**Aquaculture Department**  
Southeast Asian Fisheries Development Center



## Bacteriology / Mycology

**Bacterial isolation** P300  
(1-5 specimens)

**Bacterial identification** P750  
Conventional method (per isolate), min. of 5 isolates

**Bacterial count**  
Water samples, fry (1-10 pcs.), fish fingerlings and juveniles

**Total plate count, luminous bacteria count, total presumptive *Vibrio*** P300

***Vibrio parahaemolyticus*, *Vibrio cholerae*, *Vibrio alginolyticus* count** P300

**Marine fungal isolation** P300

**Aflatoxin detection** P500  
Aflatoxin Rapid Test Kit eLabsience

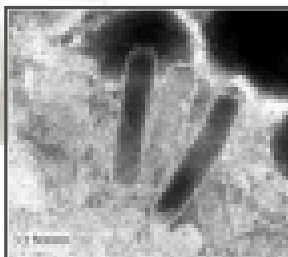
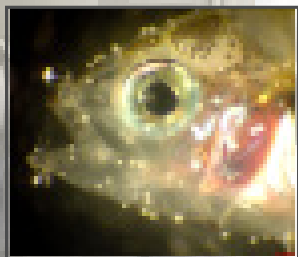
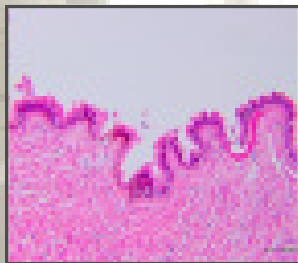
## Histopathology

H&E stain of routine paraffin sections

**Full mount** P300  
per slide

**Typical section** P300  
per slide or tissue

**Serial section** P300  
per slide



Clockwise from top left: Histological section of fish intestine tissue; Fish parasite, *Caligus* spp. under a stereomicroscope; Negatively-stained TEM image of white spot syndrome virus in shrimp; Fish infested with parasite, *Amyloodinium* spp.

## Vision



A global leader in the generation and transfer of appropriate and sustainable tropical aquaculture technologies for food security and holistic human development

## Mission

To provide dynamic and competent leadership in the generation and promotion of science-based responsible technologies to strengthen stakeholder capabilities in aquaculture and aquatic resources management.

# CONTACT US

     
Jeralyn F. Panizales  
Officer-in-Charge, LFAAT  
jafelera@seafdec.org.ph  
+63 (33) 511 9170 local 1112  
+63 (33) 330 7010

   
Dr. Eleonor A. Tendencia  
Head, Fish Health Section  
gigi@seafdec.org.ph  
+63 (33) 511 9170 local 1174 / 1177  
+63 (33) 330 7010

Dr. Leobert de la Peña  
Head, Research Division  
leobertd@seafdec.org.ph  
+63 (33) 511 9170 local 1101  
+63 (33) 330 7010



SEAFDEC/AQD  
Tigbauan 5021, Iloilo Philippines

# ANALYTICAL SERVICES



**Chemical Analysis**



**Microbiological Analysis**



**Electron Microscopy**



**Fish Health Diagnostic Services**

**Aquaculture Department**  
Southeast Asian Fisheries Development Center

# OUR SERVICES



## Chemical Analysis\*

### Moisture analysis

Moisture analyzer; Oven

>50 g	
Fresh sample	<b>P310</b>
Powdered sample	<b>P160</b>

### Complete proximate analysis P2,265

>50g	
Crude protein	<b>P665</b>
Kjeltec analyzer	
Crude fat	<b>P540</b>
Soxtec extraction	
Crude fiber	
Fibertec	
from original sample	<b>P1,325</b>
from de-fatted sample	<b>P785</b>
Ash	
Muffle furnace	<b>P275</b>

### Fatty acid profiling

Gas chromatography-ready samples only

**P1,400**

### Water analysis

>500 mL, unless indicated

pH	<b>P135</b>
Glass electrode pH meter	
>50 mL	
Alkalinity	<b>P210</b>
Titrimetry	
Ammonia-nitrogen	<b>P250</b>
Phenate method	
Ammonium-nitrogen	<b>P265</b>
Flow injection analyzer	
Chlorophyll	<b>P465</b>
Spectrophotometry	
Dissolved oxygen	<b>P285</b>
Winkler method	

\*20% discount for students

test fees subject to change without prior notice

Nitrate	<b>P375</b>
Flow injection analyzer	
Nitrite	<b>P265</b>
Colorimetry	
Phosphate	<b>P210</b>
Ascorbic acid method	
Total hardness	<b>P195</b>
EDTA titration	
Total suspended solids (TSS)	<b>P245</b>
Gravimetry	

### Soil analysis

>100 g	
pH	<b>P225</b>
glass electrode pH meter	
Organic matter	<b>P320</b>
Wackley and Black method	
Iron	<b>P425</b>
Colorimetry	
Available sulfur	<b>P400</b>
Turbidimetry	
Available phosphorus	<b>P430</b>
Olsen's method	

### Metal detection

Calcium, Magnesium, Copper, Iron	<b>P1,000</b>
Atomic Absorption Spectrophotometry	



## Microbiological Analysis\*

Bacteriological Analytical Manual (BAM) method<sup>1</sup>

Heterotrophic plate count <sup>1</sup>	<b>P240</b>
Total coliform count <sup>1</sup>	<b>P300</b>
<i>Escherichia coli</i> <sup>1</sup>	<b>P480</b>
Yeast / mold count <sup>1</sup>	<b>P300</b>
<i>Staphylococcus aureus</i> <sup>1</sup>	<b>P360</b>
<i>Salmonella spp.</i> <sup>1</sup>	<b>P480</b>
<i>Vibrio spp.</i> <sup>1</sup>	<b>P480</b>
<i>E. coli</i> and coliform detection	<b>P1,000</b>



## Electron Microscopy\*

Sample preparation + 6 photomicrographs

Transmission Electron Microscopy (TEM)	<b>P6,960</b>
Scanning Electron Microscopy (SEM)	<b>P3,180</b>



## Fish Health Diagnostic Services

### Direct microscopy of wet mounts or tissue smears

Fish / Shrimp Larval monitoring + MBV detection	<b>P250</b>
Parasite detection and identification	<b>P150</b>
1-5 specimens	

### PCR-based diagnosis

Shrimp viruses	
WSSV, IHNV	<b>P900</b>
IQ2000 kit	
WSSV and IHNV quantification	<b>P3,000</b>
Soil, Water, tissue	
TSV, YHV, GAV, IMNV	<b>P1,000</b>
IQ2000 kit	
MBV, HPV	<b>P900</b>
IQ2000 kit	
WTD	<b>P900</b>
XSV, MrNV	

Shrimp bacteria; AHPND	<b>P900</b>
IQ2000 kit	

Shrimp microsporidian parasite; EHP	<b>P900</b>
IQ2000 kit	

Fish viruses	
KHV	<b>P900</b>
IQ2000 kit	

SVCV	<b>P1,000</b>
IQ2000 kit	

VNN	<b>P1,000</b>
IQ2000 kit	

Iridovirus	<b>P900</b>
IQ2000 kit	

continued...